



DISHA IMPEX TRADING L.L.C.

ALL YOUR SAFETY REQUIREMENTS UNDER ONE ROOF



www.dishaimpex.com

HEAD PROTECTION



BUMP CAP

MODEL : H6
MATERIAL : COTTON
COLOR : NAVY BLUE, BLACK, GREY,
ORANGE, GREEN, BEIGE, RED

WELDING MASK

MODEL : H3
MATERIAL :
POLYPROPYLENE



REFLECTIVE BUMP CAP

MODEL : H6/H7
MATERIAL : COTTON
COLOR : ORANGE, GREEN, BLACK,
ROYAL BLUE, NAVY BLUE, RED

WELDING MASK AUTO DARKNESS

MODEL : H3A
MATERIAL :
POLYPROPYLENE



CHIN STRAP

MODEL : H4A
MATERIAL : NYLON

HAND HELD WELDING MASK

MODEL : H3B
MATERIAL :
POLYPROPYLENE



FACE SHIELD WITH HEAD GEAR

MODEL : H4
MATERIAL :
POLYCARBONATE

RECHARGABLE HEAD LAMP

MODEL : HA1
CHARGING TIME :
12-15 HRS.



FACE SHEILD VISOR

MODEL : HA5
MATERIAL :
POLYCARBONATE

RECHARGABLE HEAD LAMP

MODEL : HA2
MATERIAL : ALU.
ALLOY (HEAD)
CHARGING TIME :
4-5 HRS.



SUN HAT WITHOUT REFLECTIVE TAPE

MODEL : HA6



EYE PROTECTION



SAFETY SPECTACLE
MODEL : V91-CLEAR
MATERIAL :
POLYCARBONATE

SAFETY SPECTACLES WITH ADJUSTABLE TEMPLE
MODEL : E2C-CLEAR
MATERIAL :
POLYCARBONATE



SAFETY SPECTACLE
MODEL : V91-DARK
MATERIAL :
POLYCARBONATE

SAFETY SPECTACLES WITH ADJUSTABLE TEMPLE
MODEL : E2D-DARK
MATERIAL :
POLYCARBONATE



CHEMICAL GOGGLES
MODEL : E3HD - CLEAR
MATERIAL : POLYCARBONATE

SOLAR AUTO DARKNESS WELDING GOGGLES
MODEL : E7
MATERIAL :
POLYPROPYLENE



CHEMICAL GOGGLES
MODEL : E3LD - CLEAR
MATERIAL : POLYCARBONATE

SAFETY WELDING GOGGLES
MODEL : E5
MATERIAL :
POLYCARBONATE



EAR PROTECTION



EAR PLUG WITH CASE

MODEL : EP2
MATERIAL : SILICON
SNR : 30

UNIVERSAL EAR MUFFLER HELMET MOUNTED (DETACHABLE)

MODEL : EP5
STANDARD : EN352-2:2022



EAR PLUG WITH CORD

MODEL : EP1C
MATERIAL : SILICON
SNR : 33

EAR MUFFLER (HEAD BAND)

MODEL : EP4
STANDARD : EN352-2:2022



EAR MUFFLER HELMET MOUNTED

MODEL : EP7
STANDARD : EN352-2:2022



RESPIRATORY PROTECTION



HALF FACE MASK
MODEL : RP5

3M CARTRIDGE
MODEL : 6001
TYPE : ORGANIC VAPOR



3M HALF FACE MASK
MODEL : 6200
MATERIAL :
THERMOPLASTIC
ELASTOME

3M CARTRIDGE
MODEL : 6003
TYPE : ORGANIC VAPOR/
ACID GAS



CARTRIDGE - PATRON
MODEL : RPC-1

3M CARTRIDGE
MODEL : 6006
TYPE : ORGANIC VAPOR/
MULTI GAS



**3M FULL FACE MASK
WITH RESPIRATOR**
MODEL : 6800

**DISPOSABLE K95 FACE
MASK**
MODEL : KN95
COLOR : WHITE | BLUE |
BLACK



**3PLY DISPOSABLE
MASK**
MODEL : RP-1
MATERIAL :
NON-WOVEN
COLOR : BLUE/BLACK/WHITE

**DISPOSABLE DUST
MASK**
MODEL : RP2
MATERIAL : NON-WOVEN
COLOR : WHITE



HAND PROTECTION



DISPOSABLE VINYL GLOVES POWDER FREE
SAFE & SAFE
SIZE : S, M, L, XL
COLOUR: CLEAR & BLUE

LEATHER HAND GLOVES
MODEL : SPL1
MATERIAL : LEATHER



DISPOSABLE BLUE VINYL GLOVES POWDERED
SAFE & SAFE
SIZE : S, M, L, XL
COLOUR: BLUE

LEATHER HAND GLOVES (DOUBLE PLAM)
MODEL : DLP2
MATERIAL : LEATHER



DISPOSABLE NITRILE GLOVES POWDER FREE
SAFE & SAFE
SIZE : S, M, L, XL
COLOUR: BLUE

LEATHER HAND GLOVES
MODEL : WLG
MATERIAL : LEATHER



DISPOSABLE LATEX GLOVES POWDER FREE
SAFE & SAFE
SIZE : S, M, L, XL
COLOUR: BEIGE

LEATHER WELDING GLOVES
MODEL : SPL1
MATERIAL : LEATHER



DISPOSABLE HDPE GLOVES POWDER FREE
SAFE & SAFE
SIZE : S, M, L, XL
COLOUR: CLEAR

ARC FLASH GLOVES
MODEL : 378G
MATERIAL: GOAT LEATHER
STANDARD: EN388 | EN407
SIZE: S, M, L, XL, 2XL, 3XL



STAINLESS STEEL GLOVES
MODEL : SSG213-L
MATERIAL: SS306
SIZE: L
COLOUR: SILVER

STAINLESS STEEL GLOVES
MODEL : SSG213-M
MATERIAL: SS306
SIZE: M
COLOUR: SILVER



DISPOSABLE GLOVES

S.S. GLOVES

LEATHER GLOVES

HAND PROTECTION



NITRIL COATED KNITTED GLOVES

MODEL : NSG
MATERIAL : NITRILE
| POLYESTER

YELLOW HOUSE HOLD CLEANING GLOVES

MODEL : YCG
MATERIAL : LATEX
SIZE : M/L/XL



PU COATED KNITTED GLOVES

MODEL : PUCG
MATERAIL : PU

CHEMICAL GLOVES

MODEL: CG
MATERIAL: NITRILE RUBBER
STANDARD: EN 374, EN388
EN 374:2003
COLOUR: GREEN
SIZE : M/L/XL



NITRILE FOAM COATED KNITTED GLOVES

MODEL: NCK
MATERIAL : NITRILE FOAM
WITH NYLON SPANDEX LINER

CHILLER GLOVES (+5°To -5°)

MODEL : FG615
MATERIAL : FLEECE
STANDARD: 3EN388:2016+
A1:2018
COLOUR: RED



LATEX COATED KNITTED GLOVES

MODEL: LCK
MATERIAL: POLYCOTTON WITH
LATEX COATING
STANDARD: CE EN 388:
2016 3121X

SUN RUBBER GLOVES

MODEL: SNB10/SNB20
MATERIAL: LATEX RUBBER
COLOUR: BLACK
SIZE:XL



HEAT RESISTANT SLEEVE

MODEL: HRS208
MATERIAL: Para-Aramid,
polyester, and wire
STANDARD: ANSI CUT 5
ASTM F1060-08

CUT RESISTANT GLOVES

MODEL: CTR8
MATERIAL: PU COATED WITH
HPPE LINER (LEVEL 3 / LEVEL 5)
STANDARD: EN388 L5
AVAILABLE IN LEVEL 3 | LEVEL5



HEAT RESISTANT GLOVES

MODEL: HRG12
MATERIAL: META - ARAMIDE
COTTON
STANDARD: EN 388:2016
- (2.3.4.X.X) EN 407



D
I
P
P
E
D
G
L
O
V
E
S

C
L
E
A
N
I
N
G
G
L
O
V
E
S

HAND PROTECTION

WORK GLOVES



REINFORCED RIGGER GLOVES | ANTI CUT | IMPACT RESISTANT
MODEL: IRG
MATERIAL: NITRILE FOAM COATED WITH HPPE LINER
CUT LEVEL: 5



ELECTRICAL GLOVES
MODEL : KAVACH
MATERIAL: RUBBER
COLOUR: RED



DOUBLE SIDE DOTTED GLOVES
MODEL: IM52
MATERIAL: COTTON WITH PVC DOTTED
COLOUR: BLUE & BLACK



INDUSTRIAL WORK WEAR



RAIN COAT - BLUE
MODEL : BRC-1
MATERIAL : PVC WITH HOOD
SIZE : M TO 4XL

**PVC
CHEMICAL APRON**
MODEL : ICA1
COLOR : GREEN
SIZE : 35" X 45"



RAIN SUIT - BLUE
MODEL : BRS1
MATERIAL : PVC WITH HOOD
SIZE : M TO 3XL

WINTER JACKET
MODEL : WJ
SIZE : S TO 2XL



RAIN SUIT - YELLOW
MODEL : IRC-1
MATERIAL : PVC / POLYESTER
WITH HOOD
SIZE : M TO 2XL

**COLD STORAGE
PANT JACKET**
MODEL : PJCS
SIZE : M TO 2XL



RAIN SUIT - YELLOW
MODEL : IRC-2
MATERIAL : PVC / POLYESTER
WITH HOOD

**INSULATED VEST
FOR FREEZER**
MODEL : IVFC
SIZE : M TO 2XL



WELDING APRON
MODEL : IWA-1
MATERIAL : LEATHER

**INSULATED
COVERALL FOR
FREEZER**
MODEL : ICCF
SIZE : M TO 2XL



**WELDING APRON
WITH TOOL
POCKET (YELLOW)**
MODEL : IWA-2


**ELBOW AND
KNEE GUARD**
MODEL : TS1001



DISPOSABLE HYGIENE WORK WEAR



DISPOSABLE HAIR NET SINGLE ELASTIC

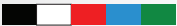
MODEL : SE
MATERIAL:
NON-WOVEN
COLOUR: 

FACE SHIELD


MODEL: DFS-2
MATERIAL : PE
COLOUR : CLEAR



DISPOSABLE HAIR NET DOUBLE ELASTIC


MODEL : DE
MATERIAL: NON-WOVEN
COLOUR: 

DISPOSABLE ARM SLEEVE


MODEL: DAS
COLOUR: 
MATERIAL : NON WOVEN



DISPOSABLE CHEF HAT


MODEL: DCH
SIZE : 12"
COLOUR: 

DISPOSABLE APRON

MODEL: DA
COLOUR: 



DISPOSABLE ASTRO CAP


MODEL: DAC
COLOUR : 
MATERIAL : NON WOVEN

DISPOSABLE POCKET RAIN COAT(PONCHO)

MODEL : IRC-4
MATERIAL : PLASTIC



DISPOSABLE BEARD MASK

MODEL : DBC
COLOUR: 
MATERIAL : NON WOVEN

DISPOSABLE POCKET RAIN COAT(BUTTON)

MODEL : IRC-3
MATERIAL : PLASTIC



FACE SHIELD SPECTACLE TYPE

MODEL : DFS-1
MATERIAL : PE
COLOUR: CLEAR



DISPOSABLE HYGIENE WORK WEAR



DISPOSABLE LAB GOWN
MODEL: IVC-2
MATERIAL : NON WOVEN
GSM : 30 | 40
COLOUR:

DISPOSABLE PRAYER MATT
MODEL : DPM



DISPOSABLE VISITOR COAT - 40 GSM
MODEL : IVC-1
MATERIAL : NON WOVEN
COLOUR:
SIZE : L TO 2XL

DISPOSABLE SUN BED COVER
MODEL : DSBC



DISPOSABLE COVERALL
MODEL : DC40
SIZE : M TO 3XL
MATERIAL: NON-WOVEN
GSM : 40
COLOUR:



DISPOSABLE COVERALL
MODEL : DC30
SIZE : M TO 3XL
MATERIAL: NON-WOVEN
GSM : 30
COLOUR:



DISPOSABLE SHOE COVER
MODEL: DSC
MATERIAL : PP
COLOUR:



SAFETY VEST



HIGH VISIBILITY SAFETY VEST
MODEL : GN7
MATERIAL : REFLECTIVE NET
GSM : 120

HIGH VISIBILITY SAFETY VEST
MODEL : GF1
MATERIAL : 100% POLYESTER
FLOURESCENT FABRIC
GSM : 120



HIGH VISIBILITY SAFETY VEST
MODEL : ON1
MATERIAL : REFLECTIVE NET
GSM : 120

HIGH VISIBILITY SAFETY VEST
MODEL : GF2
MATERIAL : 100% POLYESTER
FLOURESCENT FABRIC
GSM : 120



HIGH VISIBILITY SAFETY VEST
MODEL : GN1
MATERIAL : 100% POLYESTER
FLUORESCENT MESH
GSM : 120

HIGH VISIBILITY SAFETY VEST
MODEL : GF3
FABRIC : REFLECTIVE FABRIC
GSM : 120



HIGH VISIBILITY SAFETY VEST
MODEL : GBF1
MATERIAL : 100% POLYESTER
FABRIC
GSM : 120

HIGH VISIBILITY SAFETY VEST
MODEL : OF1
MATERIAL : 100% POLYESTER
FLOURESCENT FABRIC
GSM : 120



HIGH VISIBILITY SAFETY VEST
MODEL : GBF2
MATERIAL : 100% POLYESTER
FABRIC
GSM : 120

HIGH VISIBILITY SAFETY VEST
MODEL : OF2
MATERIAL : 100% POLYESTER
FLOURESCENT FABRIC
GSM : 120



HIGH VISIBILITY SAFETY VEST
MODEL : GBF3
MATERIAL : 100% POLYESTER
FABRIC
GSM : 120

HIGH VISIBILITY SAFETY VEST
MODEL : YF1
MATERIAL : 100% POLYESTER
FLOURESCENT FABRIC
GSM : 120



SAFETY VEST



HIGH VISIBILITY SAFETY VEST

MODEL : 60OF5 (ORANGE)
MATERIAL : 100% POLYESTER
FLUORESCENT FABRIC
GSM : 60

HIGH VISIBILITY SAFETY VEST

MODEL : F4 (GREY)
MATERIAL : 100% POLYESTER
FLUORESCENT FABRIC
GSM : 120



HIGH VISIBILITY SAFETY VEST

MODEL : 60GF5 (GREEN)
MATERIAL : 100% POLYESTER
FLUORESCENT FABRIC
GSM : 60

HIGH VISIBILITY SAFETY VEST

MODEL : F4 (ORANGE)
MATERIAL : 100% POLYESTER
FLUORESCENT FABRIC
GSM : 120



HIGH VISIBILITY SAFETY VEST

MODEL : F4 (RED)
MATERIAL : 100% POLYESTER
FLUORESCENT FABRIC
GSM : 120



HIGH VISIBILITY SAFETY VEST

MODEL : 60GF4(GREEN)
MATERIAL : 100% POLYESTER
FLUORESCENT FABRIC
GSM : 60

HIGH VISIBILITY SAFETY VEST

MODEL : F4 (YELLOW)
MATERIAL : 100% POLYESTER
FLUORESCENT FABRIC
GSM : 120



HIGH VISIBILITY SAFETY VEST

MODEL : 60OF4
MATERIAL : 100% POLYESTER
FLUORESCENT FABRIC
GSM : 60

HIGH VISIBILITY SAFETY VEST

MODEL : F4 (BLACK)
MATERIAL : 100% POLYESTER
FLUORESCENT FABRIC
GSM : 120



HIGH VISIBILITY SAFETY VEST

MODEL : F4 (BLUE)
MATERIAL : 100% POLYESTER
FLUORESCENT FABRIC
GSM : 120



SAFETY VEST



HIGH VISIBILITY CYCLING BELT

MODEL : CB
MATERIAL : NYLON FABRIC
SIZE : ADJUSTABLE
COLOR : ORANGE | GREEN | BLACK | BLUE

HIGH VISIBILITY SAFETY VEST

MODEL : RF7
MATERIAL : POLYESTER
FABRIC
GSM : 120



HIGH VISIBILITY SAFETY VEST

MODEL : GFN1
FRONT FABRIC : 100% POLYESTER
BACK TOP : FABRIC
BACK BOTTOM : MESH
GSM : 120

HIGH VISIBILITY SAFETY VEST

MODEL : G BLUE 8
MATERIAL : POLYESTER
FABRIC
GSM : 120



HIGH VISIBILITY SAFETY VEST

MODEL : OF6
FRONT MATERIAL : 100% POLYESTER FLUORESCENT FABRIC
BACK PANEL : MESH
GSM : 120

HIGH VISIBILITY SAFETY VEST

MODEL : G ORANGE 9
MATERIAL : POLYESTER
FABRIC
GSM : 120



HIGH VISIBILITY SAFETY VEST

MODEL : GF6
MATERIAL : 100% POLYESTER
FLOUORESCENT FABRIC
GSM : 120



FOOT PROTECTION



NEOM-BLACK
MODEL : S 9372
UPPER : LEATHER
SOLE : DUAL DENSITY PU/
RUBBER
STANDARD : S3
COMPOSITE TOE / KEVLAR PLATE
SRC EH 18KV

DEFENDER
MODEL : PT999
UPPER : LEATHER
SOLE : PU
COMPOSITE TOE /
KEVLAR PLATE



NEOM-BROWN
MODEL : S 9372
UPPER : LEATHER
SOLE : DUAL DENSITY PU/
RUBBER
STANDARD : S3
COMPOSITE TOE / KEVLAR PLATE
SRC EH 18KV

EXECUTIVE
MODEL : PT 883
UPPER : LEATHER
SOLE : PU
COMPOSITE TOE /
KEVLAR PLATE



BISON
MODEL : B2412
UPPER : LEATHER
SOLE : PU
STEEL TOE CAP/
STEEL PLATE

SPARTAN
MODEL : S0369
UPPER : LEATHER
SOLE : PU
STEEL TOE/
STEEL PLATE



COSMOS
MODEL : C 1602
UPPER : LEATHER
SOLE : PU
STEEL TOE CAP/
STEEL PLATE

JOGGER
MODEL : S998
UPPER : LEATHER
SOLE : PU
COMPOSITE TOE /
KEVLAR PLATE



RIDER
MODEL : R 66774
UPPER : LEATHER & FLY KNETT
SOLE : PU
STEEL TOE /
STEEL PLATE

GIA
MODEL : G1706
UPPER : LEATHER
SOLE : PU
STEEL TOE/
STEEL PLATE



RAPTOR
MODEL : 3301
UPPER : LEATHER
SOLE : PU
STEEL TOE/
STEEL PLATE

TURBO
MODEL : O3302
UPPER : LEATHER
SOLE : PU
COMPOSITE TOE /
KEVLAR PLATE



FOOT PROTECTION



RIGGER
MODEL : O6793
UPPER : LEATHER
SOLE : PU
STEEL TOE CAP

**GUM BOOT
- BLACK**
MODEL : W3072-B
UPPER : PVC
SOLE : PVC



RIGGER III -BLACK
MODEL : O6799
UPPER : LEATHER
SOLE : PU
TOE : STEEL TOE/
STEEL PLATE

**GUM BOOT -
BLACK**
MODEL : W3073-B
UPPER : PVC
SOLE : PVC
TOE : STEEL TOE



RIGGER III-BROWN
MODEL : 06800
UPPER : LEATHER
SOLE : PU
STEEL TOE/
STEEL PLATE

**GUM BOOT
- YELLOW**
MODEL : W3074-Y
UPPER : PVC
SOLE : PVC
TOE : STEEL TOE



**GUM BOOT
- WHITE**
MODEL : W3071-WH
UPPER : PVC
SOLE : PVC



DOCKERS
MODEL : D 8743
UPPER : LEATHER
SOLE : PU
CLOSURE : H/D LACE

CATRINA
MODEL : C8813
UPPER : LEATHER
SOLE : RUBBER
INSOCK : EVA/PU



DOCKERS II
MODEL : D 8744
UPPER : LEATHER
SOLE : PU
CLOSURE : SLIP-ON

SENATOR
MODEL : S8743
UPPER : LEATHER
SOLE : RUBBER
INSOCK : EVA/PU



SITE SAFETY - EYEWASH & STATIONS

P
O
R
T
A
B
L
E

E
Y
E

W
A
S
H

F
I
X
E
D

E
Y
E

W
A
S
H



PORTABLE EYEWASH STATION WITH LIQUID
(2 X 500 ML BOTTLE)
MODEL : PEW-C

ABS COMBINATION EYEWASH AND SHOWER
MODEL : EWFM-AB



EYE WASH LIQUID
SIZE : 500 ML

SS WALL MOUNTED EYEWASH
MODEL : EWM
MATERIAL: STAINLESS STEEL



PORTABLE EYE WASH
MODEL: PEW-A
SIZE : 35 LTR

SS FLOOR MOUNTED EYEWASH
MODEL: EWFM
MATERIAL : SS 306
FINISH : MIRROR



PORTABLE EYE WASH
MODEL: PEW-B
SIZE : 60 LTR

SS COMBINATION EYEWASH AND SHOWER WITH FOOT PEDAL
MODEL: EWFM-S
MATERIAL : SS 204
FINISH : MATT



ABS WALL MOUNTED EYEWASH
MODEL: EWWM-ABS-1

SS EYEWASH COMBINATION AND SHOWER
MODEL : EWFM-2
MATERIAL: SS 306
FINISH : MIRROR



ABS FLOOR MOUNTED EYEWASH
MODEL: EWFM-ABS-1

SS EYEWASH COMBINATION AND SHOWER 8104
MODEL : EWFM-S-2
MATERIAL: SS 204
FINISH : MATT



OIL SPILL KIT & ACCESSORIES

BAG TYPE SPILL KIT



OIL SPILL KIT (BAG TYPE)
 MODEL : OSK-20
 SIZE : 20 LTR / 5 GALLON

OIL ABSORBENT SOCKS
 SIZE : 3" X 4" FT



OIL SPILL KIT (BAG TYPE)
 MODEL : OSK-40
 SIZE : 40 LTR / 10 GALLON

OIL ABSORBENT PILLOW
 SIZE : L 26 CM X W 23 CM



ACCESSORIES

BIN TYPE SPILL KIT



OIL SPILL KIT (BIN TYPE)
 MODEL : OSK-80
 SIZE : 80 LTR / 20 GALLON

OIL ABSORBENT PADS
 SIZE : L 50 CM X W 40 CM



OIL SPILL KIT (BIN TYPE)
 MODEL : OSK-120
 SIZE : 120 LTR / 30 GALLON

BAGS FOR SPILL KIT
 COLOR : YELLOW



OIL SPILL KIT (BIN TYPE)
 MODEL : OSK-240
 SIZE : 240 LTR / 60 GALLON

BIN FOR SPILL KIT ONLY
 COLOR : YELLOW



CHEMICAL SPILL KIT & ACCESSORIES

BAG TYPE SPILL KIT



CHEMICAL SPILL KIT (BAG TYPE)
MODEL : CSK-20
SIZE : 20 LTR / 5 GALLON

CHEMICAL ABSORBANT PILLOW
SIZE : L 26 CM X W 23 CM



CHEMICAL SPILL KIT (BAG TYPE)
MODEL : CSK-40
SIZE : 40 LTR / 10 GALLON

CHEMICAL ABSORBANT PADS
SIZE : L 50 CM X W 40 CM



BIN TYPE SPILL KIT



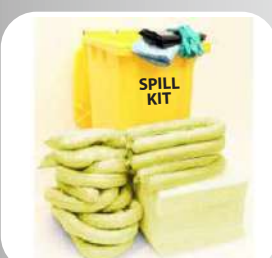
CHEMICAL SPILL KIT (BIN TYPE)
MODEL : CSK-80
SIZE : 80 LTR / 20 GALLON

BAGS FOR SPILL KIT
COLOR : YELLOW



CHEMICAL SPILL KIT (BIN TYPE)
MODEL : CSK-120
SIZE : 120 LTR / 30 GALLON

BIN FOR SPILL KIT ONLY
COLOR : YELLOW



CHEMICAL SPILL KIT (BIN TYPE)
MODEL : CSK-240
SIZE : 240 LTR / 60 GALLON

ACCESSORIES



CHEMICAL ABSORBANT SOCKS
SIZE : 3" X 4" FT



DRUM SPILL PALLET



2 DRUM SPILL PALLET

MODEL : DSP-2

SIZE : 300*1300*690 MM

SUMP : 120L/32US GAL

STATIC LOAD : 1200KG

DYNAMIC LOAD : 600KG



4 DRUM SPILL PALLET

MODEL : DSP-4

SIZE : 1300*1300 MM

SUMP : 260L/69US GAL

STATIC LOAD : 2600KG

DYNAMIC LOAD : 2600KG



FIRE BLANKET



FIRE BLANKET
MODEL : FB-A-44
SIZE : 4X4
TYPE : BOX

FIRE BLANKET
MODEL : FB-B-44
SIZE : 4X4
TYPE : BAG



FIRE BLANKET
MODEL : FB-A-46
SIZE : 4X6
TYPE : BOX

FIRE BLANKET
MODEL : FB-B-46
SIZE : 4X6
TYPE : BAG



FIRE BLANKET
MODEL : FB-A-66
SIZE : 6X6
TYPE : BOX

FIRE BLANKET
MODEL : FB-B-66
SIZE : 6x6
TYPE : BAG



LIFE JACKET & RESCUE EQUIPMENT

L
I
F
E
J
A
C
K
E
T
S



**LIFE JACKET
WITHOUT ZIPPER**
MODEL : LJWOZ

**FOLDING
STRETCHER**
MODEL : EFS
WEIGHT : 4.3 KGS
COLOUR : ORANGE



**LIFE JACKET
WITH ZIPPER**
MODEL : LJWZ

**AMBULANCE
STRETCHER**
MODEL : ESA
WEIGHT : 40 KGS
CAPACITY : 159 KGS



R
E
S
C
U
E
E
Q
U
I
P
M
E
N
T



LIFE BOUY RING
MODEL : LBR-PS
WEIGHT : 2.50 KGS

**HEAD
IMMOBILISER**
MODEL : EHI



**LIFE GUARD
RESCUE TUBE**
MODEL : LGT1.20
SIZE : 1.20 MTR

**RECHARGEABLE
MEGAPHONE**
MODEL : MGP-R



EVECUATION CHAIR
MODEL : EVC
WEIGHT : 14 KGS
CAPACITY : 159 KGS
MATERIAL : ALUMINIUM



STAIR STRETCHER
MODEL : ESS
WEIGHT : 8 KGS
CAPACITY : 159 KGS



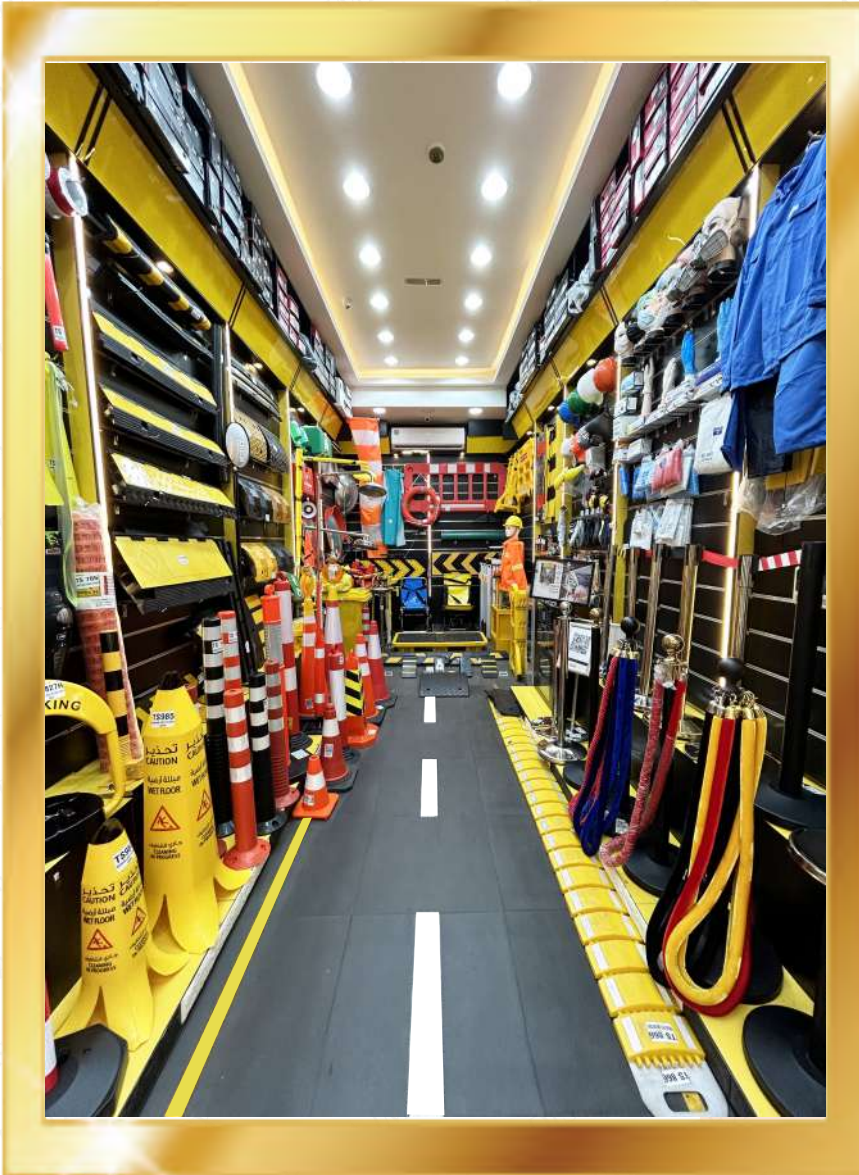
STOCKIST



PATRON
WALK FEARLESS



SAFE AND SAFE
SINCE 2002



export
WORLDWIDE



STOCK AVAILABLE

OUR SHOWROOM

Shop No. 4, Al Ameer Building, 11B Street, Nr Naif Market,
Deira, Dubai, UAE

NOTES
